

Please join us at Kent Cottage, Landfall, Brigus  
On

*Sunday, August 21 at 3.00 pm*

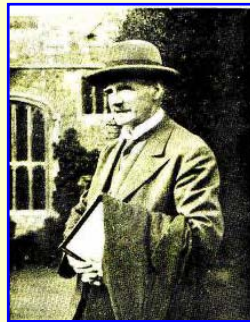
On the occasion of  
*Unveiling Landfall's Interpretive Signage*

Provided through the generosity of the  
Newfoundland and Labrador  
Department of Tourism, Culture and Recreation.

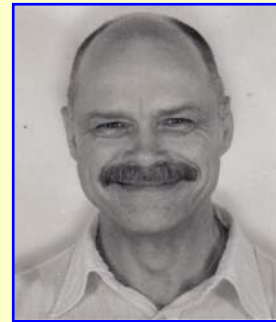
Relatives of  
**A. E. Harris,**  
Owner of Kent Cottage from 1929-1933,  
who are visiting from the UK,  
will also attend.



Rockwell Kent



A.E. Harris



Bradley J. (Jake) Folensbee

*All are welcome!! Light refreshments will be served.  
Parking at Landfall is limited and the road is hazardous. Hence we suggest parking  
in the town and walking to Landfall. However, if assistance is needed, please call  
709 685 7039 and someone will be pleased to assist you.*

The Landfall Trust

[www.landfalltrust.org](http://www.landfalltrust.org)